

Reinventing Public Streets for Value Capture

Scott Polikov

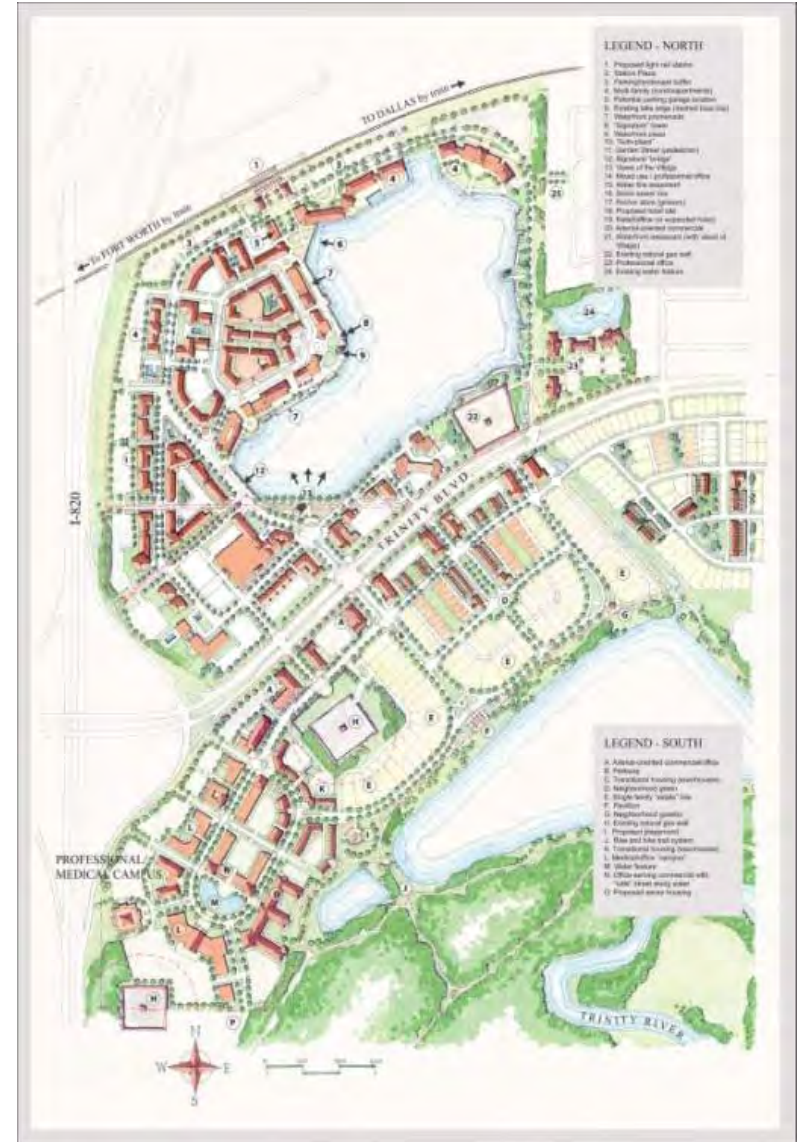


A GATEWAYPLANNING and **Balfour Beatty** Company

Trinity Lakes, Ft. Worth



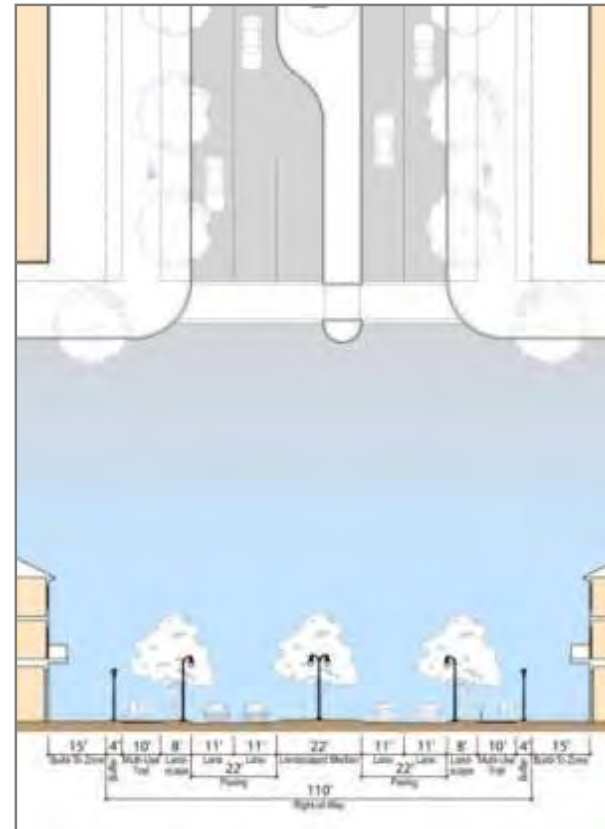
Trinity Lakes, Ft. Worth



Form-Based Plan and Code (driving TOD in a reclamation context)

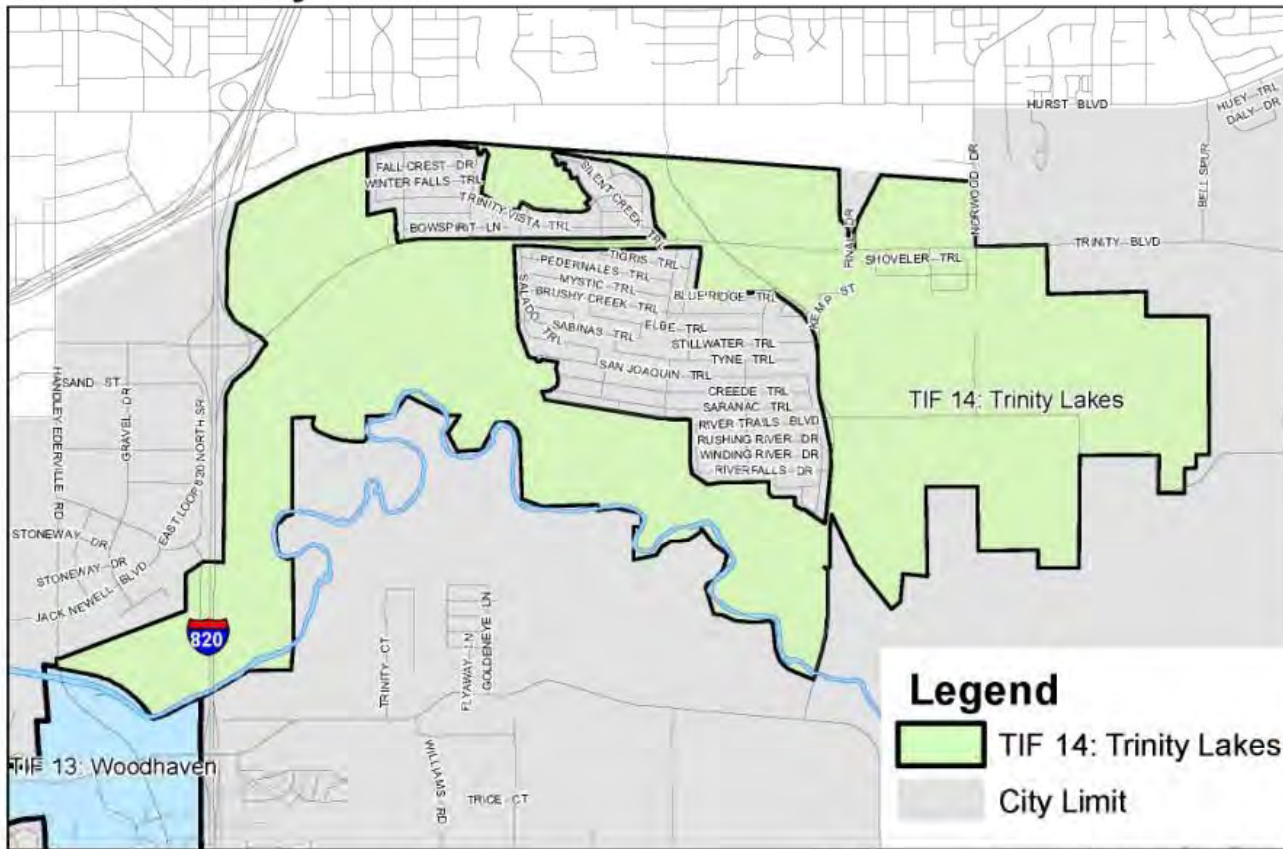


Which design for Trinity Boulevard? When?



Projected additional value + \$500 Million

TIF 14: Trinity Lakes



Housing & Economic Development
City of Fort Worth

Prepared On: September 6, 2012

TIF Project Plan

Trinity Blvd. improvements from 820 to Precinct Line Rd.	13,249,000
Precinct Line Rd. from Concho Trail to River Falls Dr.	5,950,000
Trinity Trail System improvements, 6.5 miles	3,000,000
Local street improvements in mixed-use area	10,305,250
Enhanced wayfinding signage, structures, elements	300,000
Waterfront improvements	850,000
Public area facility enhancements	750,000
Bicycle facilities, connections, public information stations	550,000
Trinity Blvd. improvements from Precinct Line Rd. to S. Norwood Dr.	12,500,000
Public transit improvements	8,000,000
Land acquisition for public transit improvements	2,500,000
Public parking facilities associated with public transit improvements	4,500,000
TOTAL PROJECT COSTS	\$62,454,250

TxDOT established a new process for Eco. Devop.



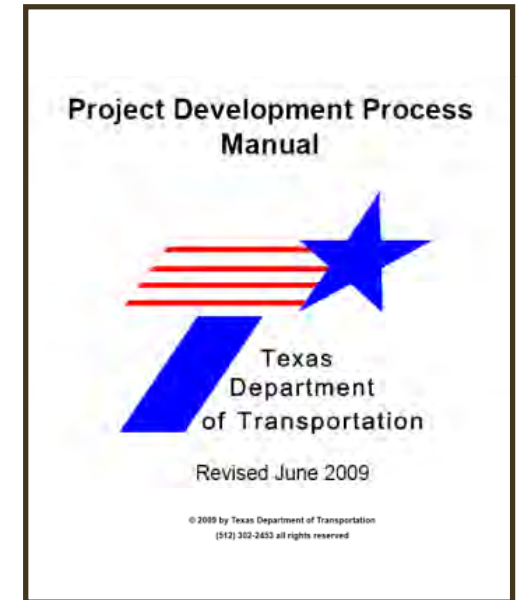
TxDOT Project Manual amended (in blue)

Subsection 1000

“For urban projects, particularly capacity improvements, the need for a project may be determined from traffic modeling of future travel demands as well as from the need for a sustainable street and transit network associated with... urban design established in regional plans, comprehensive plans, neighborhood plans, other local plans, special district plans, relevant public-private partnerships or economic development plans.”

Subsection 1330

The Institute of Transportation Engineers (ITE) and the Congress for the New Urbanism (CNU) have developed a proposed recommended practice Those resources and the other resource materials listed below shall provide guidance for the CSS process.

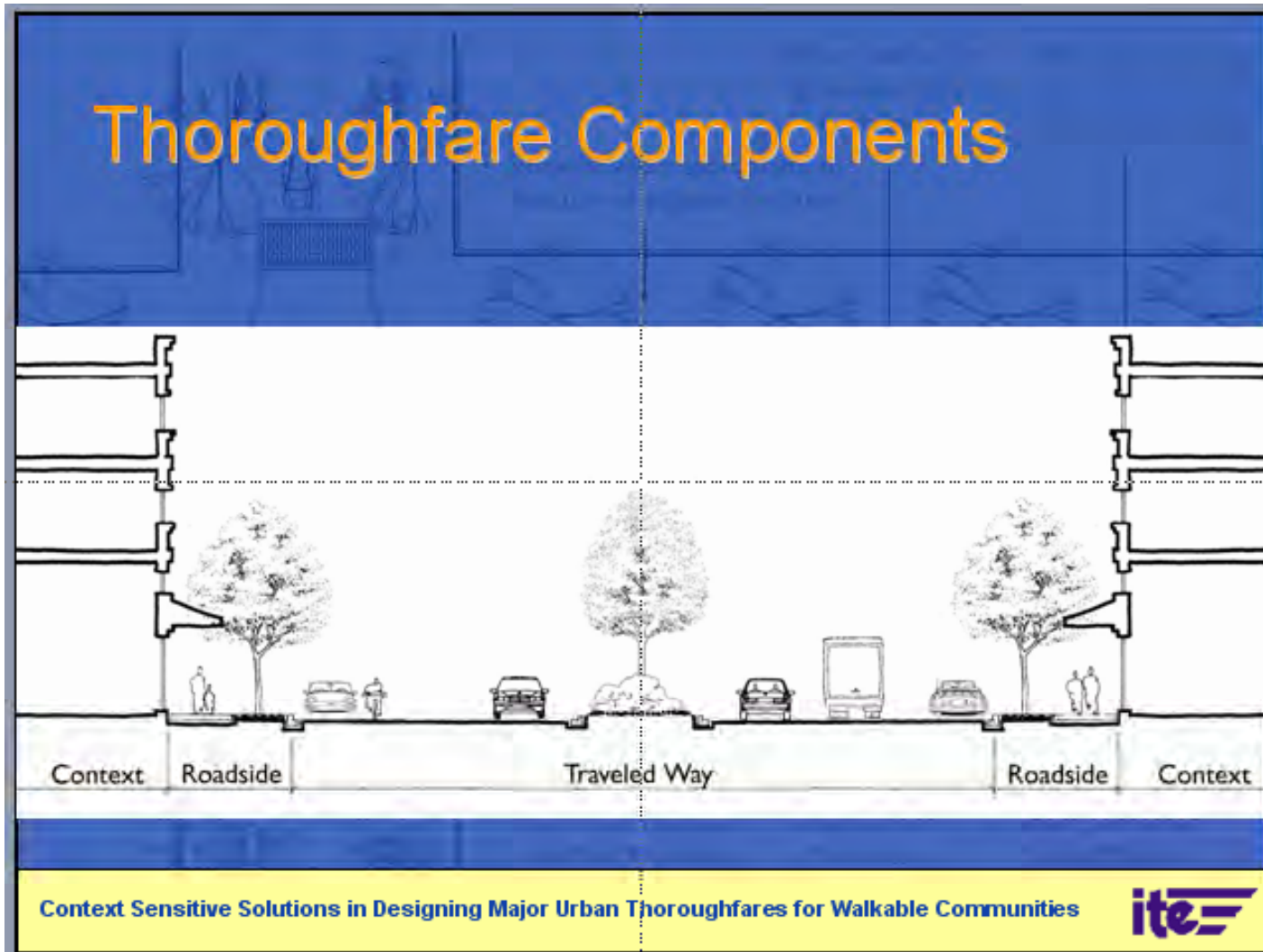


Accommodating goals comprehensively

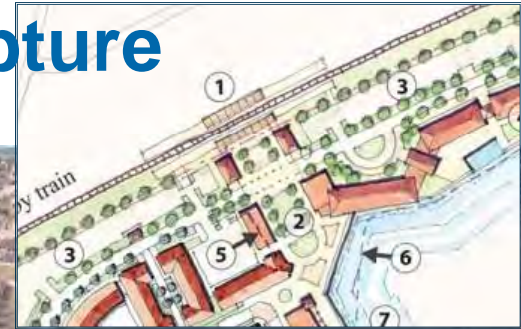
- Traffic Operations
- Transit
- Pedestrians
- Bicycles
- Cars
- Parking
- Landscaping
- Zoning
- Development



From building to building, not just within ROW



Extending Walkshed for Value Capture



Kimley-Horn and Associates, Inc.

GATEWAYPLANNING

VIALTA GROUP
A GATEWAYPLANNING and Balfour Beatty Company

VIALTA
G R O U P

A line drawing of a bridge with a central arch and a building with a classical facade and a tower to the right.

A GATEWAYPLANNING and **Balfour Beatty** Company